



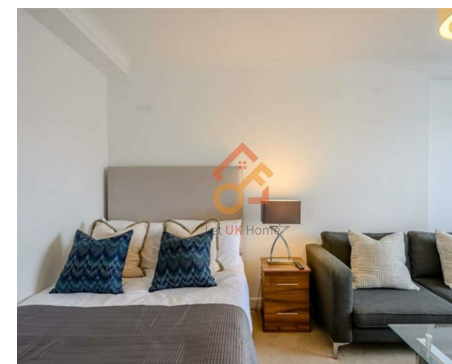
Let **UK** Home

1 Bedrooms

Flat - Studio

Located in London

£2,817 Per Month



info@letukhome.co.uk

<https://www.letukhome.co.uk/>

01795 358 886



39 Hill Street, Mayfair London

W1J 5NA



Let UK Home are pleased to offer a well proportioned studio apartment on the sixth floor of this beautiful red brick building, situated in the heart of London's fashionable Mayfair, neighbouring the famous Berkeley Square.

The apartment comprises a large living room area, modern bathroom and a unique kitchenette with access to a private gated communal garden.

Hill Street, benefits from spacious living accommodation, lift service, on-site building manager, and is nestled conveniently between two of London's parks Hyde Park and Green Park.

Apartment benefits form great transport links including Green Park, Bond Street and Marble Arch stations - all within a short stroll away.

39 Hill Street, Mayfair London

£2,817 Per Month



- 6th Floor
- 24 hour maintenance service | Superfast Broadband
- Flexible rental terms
- Access to a private gated communal garden
- Available furnished or unfurnished | Pet Friendly
- On site building manager



Let **UK** Home

3F 2 Eastbourne Terrace

Paddington

London

W2 6LG

01795 358 886

info@letukhome.co.uk

Council Tax Band: F

Local Authority:

Agents Note: Whilst every care has been taken to prepare these particulars, they are for guidance purposes only. All measurements are approximate and are for general guidance purposes only and whilst every care has been taken to ensure their accuracy, they should not be relied upon and potential buyers/tenants are advised to recheck the measurements.

Energy Efficiency Rating		
	Current	Potential
Very energy efficient - lower running costs		
(92 plus) A		
(81-91) B		
(69-80) C		
(55-68) D		
(39-54) E		
(21-38) F		
(11-20) G		
Not energy efficient - higher running costs		
England & Wales		
EU Directive 2002/91/EC		

<https://www.letukhome.co.uk/>